



What is **Assignments** in the Teams?

- It is one way that classwork and study can be set for your child by our teachers.
- It enables us to track your child's progress, engagement, understanding and learning.

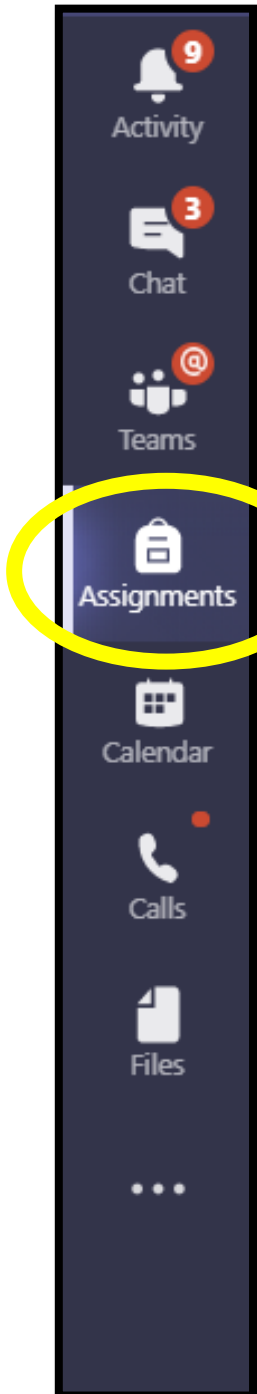
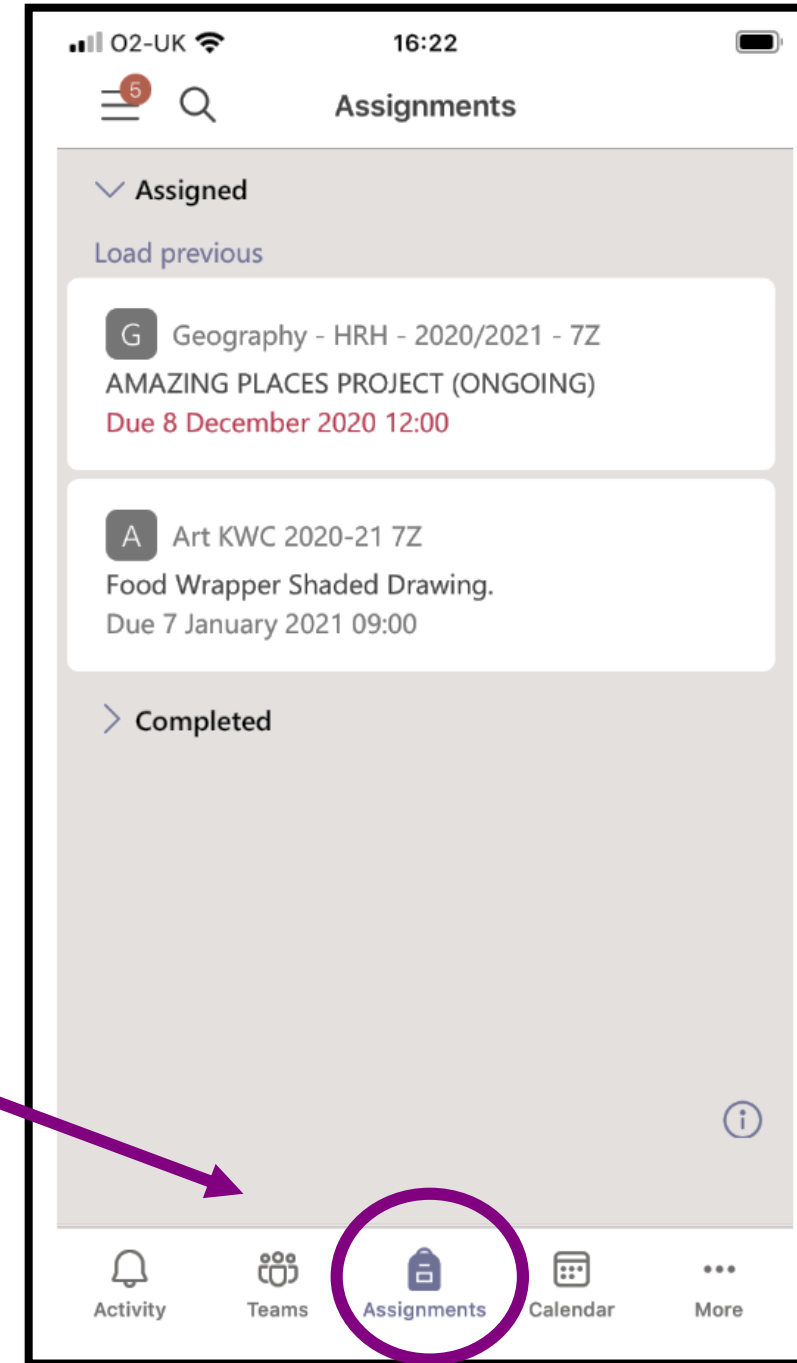
Laptop guide of how to access Assignments:

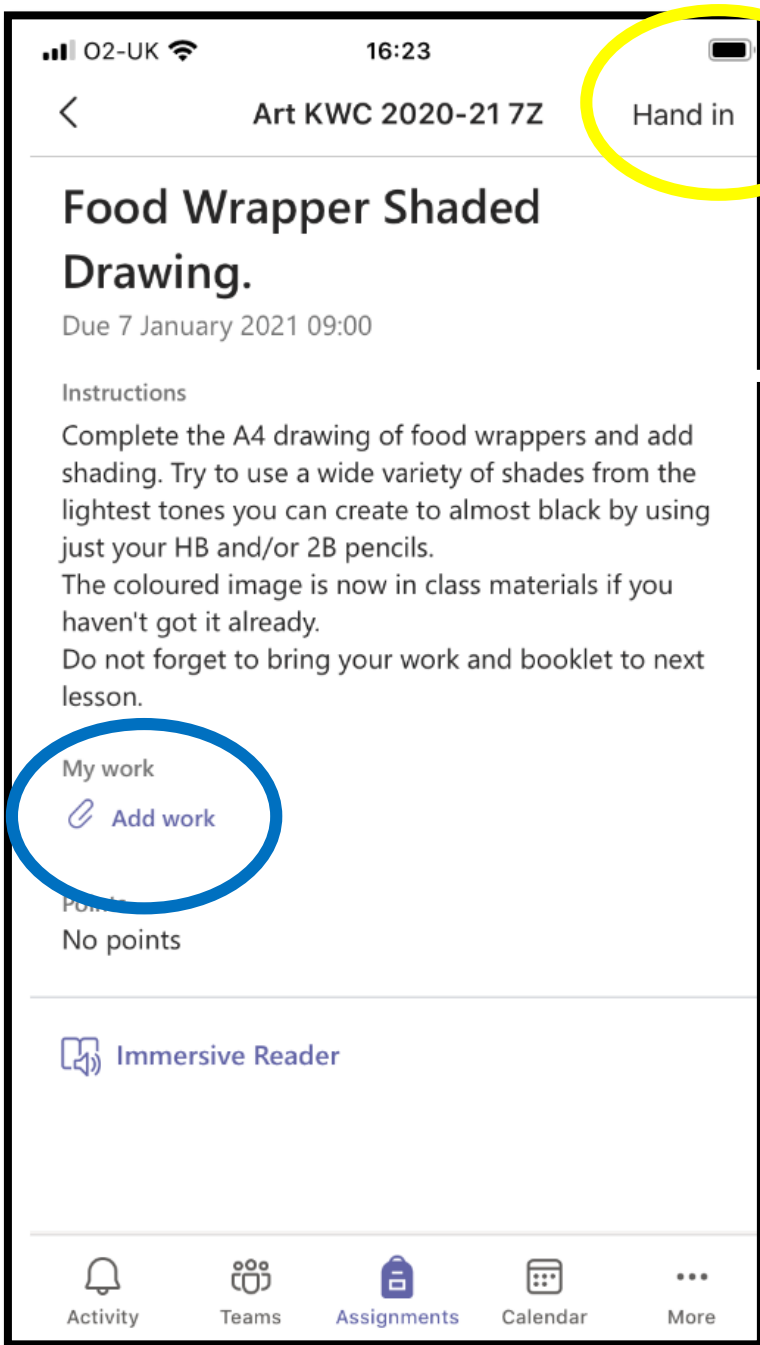
1. Open TEAMS.
2. On the left hand side your child will click Assignments.
3. This will provide a list of what work is due and by when.

Students view

Mobile phone guide of how to access Assignments:

1. Open TEAMS on your child's phone.
2. At the bottom of the screen it will say 'assignments' click this and the list of work has been set and when it is due will appear.

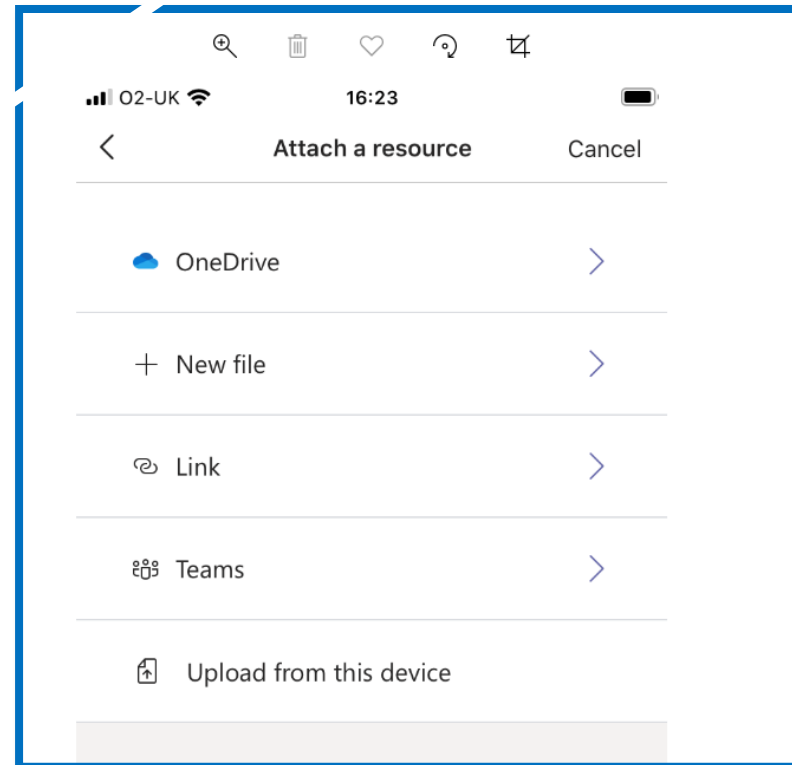




Once you have uploaded your photo, click 'Hand in' to send work back to your teacher.

See yellow circle left.

- Follow instructions the teacher has given.
- Click 'add work' if that is required.
- A new window will open to attach the work.



Weekly Parental Emails about your child's Assignments.

You will see an overview summary as shown here, of the previous 7 days work.

Weekly Assignment Summary
Saturday, January 9, 2021

Here's a summary of assignment updates for [REDACTED] from last week and a peek at upcoming due dates.

Previous week: January 3 - January 9

Turned in ✓ 7 Not turned in ! 0

Computing 2020-21

Computer Crime & Cyber-Security (Quiz) ✓
Turned in • Due January 6

7Z Maths 2020-21

Year 7 work for Term 2 Week 1 ✓

Coming up: January 10 - January 16

Assignments created before Saturday, January 9, 2021. More may be added

January 11

English | 2020

Animals in the Media 1 - Animal Facts

January 12

RPE | 2020-21

08/01/21- Religious Morality

January 13

History RP | 2020-21 •

CAT 2 Why did William the Battle of Hastings?

You will also see what is already set for the next 7 days so far...

If students need IT support they can email:

swastudentremotesupport@smithswood.fmat.co.uk