
INDUCTION BOOKLET 2021

 **SMITH'S WOOD
ACADEMY**

PART OF THE FAIRFAX MULTI-ACADEMY TRUST



CORE VALUES AND BELIEFS

EXCELLENCE:

We strive for the highest quality to ensure excellent outcomes.

DEDICATION:

We believe there is dignity in hard work and effort.

AMBITION:

We want the very best for our students.

INTEGRITY:

We believe in openness and transparency.

TRADITION:

We believe in old-fashioned manners, courtesy and respect.

We are delighted that you have chosen to send your child to Smith's Wood Academy. Smith's Wood Academy is one of a family of four academies that form the Fairfax Multi-Academy Trust (FMAT).

Established in 2014, FMAT is an educational charity, which encourages its academies to celebrate their own uniqueness, whilst sharing one mission, vision and set of values.

Our mission is "Enriching Lives; Transforming Futures". We achieve this by ensuring all of our students access a broad and wide-ranging curriculum, while being supported in a structured, kind and caring environment.

Our family is a values-led organisation. The following five values underpin all of the work we do:

Excellence - We strive for the highest quality to ensure excellent outcomes and personal achievements.

Dedication - We believe there is dignity in hard work and effort.

Ambition - We aim to be the best that we can be, in all that we do.

Integrity - We believe in openness, honesty and have a real sense of moral purpose.

Tradition - We believe in good manners, kindness and respect.

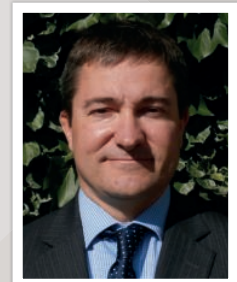
Our vision is that every child within the Trust, regardless of their background, will attend an Academy that offers a high-quality education.

What do we mean by 'high-quality of education'?

Every child is recognised as an individual and has access to first-class pastoral care because we want your child to be happy;

Every child benefits from a wide range of enriching opportunities because we place great emphasis on your child's personal development;

Every child benefits from dedicated leaders, teachers and staff who are relentless in their ambition to improve the quality of teaching in our academies because we know excellent teaching is key to transforming the futures of our students.



Mr Simon Jones
CEO Fairfax Multi-Academy Trust

HEAD OF ACADEMY WELCOME	3
INTRODUCTION	4
CURRICULUM/TIMETABLE INFORMATION	5
STUDENT SUPPORT	6
KEY CONTACTS	7
NUMERACY AND LITERACY	8
HOUSE SYSTEM	9
HOUSE PARTICIPATION LEADERS	10
SEND	12
REWARDS AND EXPECTATIONS	14
BEHAVIOUR FOR LEARNING	15
ATTENDANCE AND PUNCTUALITY	16
SAFEGUARDING	18
COMMUNICATION WITH PARENTS	19
UNIFORM	20

I would like to take this opportunity to offer you a very warm welcome to Smith's Wood Academy. I am delighted that your child is joining us in September and I look forward, very much, to getting to know them over the next 5 years.

I understand that the move from primary to secondary school can be a daunting experience for students (and also for parents!) but I have every confidence that through working together we can make this a smooth transition for your child.

As Head of Academy at Smith's Wood, I am extremely proud of our students' achievements and the pride they take in all aspects of school life. In joining Smith's Wood students are, in fact, becoming a member of a wider family of schools – the Fairfax Multi-Academy Trust. Our family of schools was established in 2014 by a dedicated group of leaders committed to enriching the lives of our students and transforming their futures. This family will be there to support, guide encourage and celebrate with them over the coming years. As a result of our extended family of schools, our students have access to a wide range of enriching opportunities.

Our mission is to Enrich Lives; Transform Futures. This is what we will work hard to do, every day, for your child.

I am confident that in teaching our students to uphold the values of the Trust we will equip them for a bright, happy and successful future.

Mr Richard Cornell
Acting Head of Academy



INTRODUCTION

The purpose of this booklet is to provide you with plenty of information to help put your mind at ease for the upcoming transition of your child's education at Smith's Wood Academy.

You can find more information about Smith's Wood Academy on our website and if you have any further queries you can contact us either by phone or email, please see below for details.

We look forward to meeting you all in the near future.

☎ 0121 788 4100

✉ admissions@smithswood.fmat.co.uk

🌐 www.smithswood.co.uk

“

IT'S GOOD BECAUSE WHEN IT COMES TO SPORTS THERE'S HOUSE COMPETITIONS AND I'M COMPETITIVE. MENTOR TIME IS GOOD BECAUSE STUDENT COUNCIL REPS DISCUSS SCHOOL ISSUES WITH US. MY MENTOR TUTOR HELPS ME AROUND SCHOOL.

English
Mathematics
Science
History
Geography
PE
Spanish
Art
RE
PSHE
Music
Drama

YEAR 7 STUDENTS WILL STUDY:

In Year 7 students have the opportunity to study a broad and varied curriculum over a one-week timetable. Each lesson is one hour long.

Students will keep their timetable in their blazer pocket and use it to help them to navigate around school.

CURRICULUM



The pastoral care and support for our students is a priority for the Academy. We have a strong pastoral support network to ensure that no child is forgotten and that we effectively meet their pastoral needs.

This support network also includes;

- A SEND team comprising a SENDCo, Deputy SENDCo and a team of Teaching Assistants;
- A pastoral support team;
- A non-teaching Designated Safeguarding Lead (DSL) and one deputy Designated Safeguarding Lead.
- A school Medical Advisor (specialising in mental health);
- Attendance Officer;

We do our best to prevent issues occurring and we will deal with concerns as quickly and thoroughly as possible. If you wish to speak to a member of staff in person, please bear in mind that due to teaching commitments it is not always possible to meet with a staff member without making an appointment. Please contact the school to arrange this.

“

“MY FAVOURITE THING ABOUT SMITH'S WOOD ACADEMY IS THE PRACTICAL SUBJECTS AND MATHS IS GREAT HERE TOO.”



Mrs Brookes

MRS BROOKES | DESIGNATED SAFEGUARDING LEAD

The Designated Safeguarding Lead at the Academy delivers a range of support for students who are experiencing difficulties at home and in the community. She ensures that all staff are trained how to recognise and respond to any concerns shared by a student. This could be if they are worried about the welfare of themselves or someone they know. Students are encouraged to speak to a member of staff they trust about problems they are experiencing. Safeguarding and the welfare of the Academy Community is a priority above all else.



Miss Butcher

MISS BUTCHER | Y7 EXCELLENCE LEADER

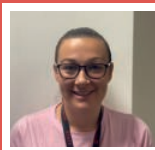
Hello Year 7 and welcome to Smith's Wood Academy. I hope you are feeling excited about starting a new school in September. I am your Year 7 Excellence Leader and will be looking after you next year. My job is to support and guide you through the first year of your journey here at Smith's Wood Academy. I am very much looking forward to you joining us and working closely with you and your family.



Mrs Simmonds

MRS SIMMONDS | Y7 DEPUTY EXCELLENCE LEADER

My name is Mrs Simmonds and I am the Year 7 Deputy Excellence Leader at Smith's Wood Academy. I will help and guide you during your transition between years 6 and 7. I will encourage and monitor your attendance to school, and support you in any way that I can.



Mrs Gibson

MRS GIBSON | ANTI-BULLYING LEAD

I feel that it is imperative for pupils to feel safe at secondary school, Pupils in the Academy have members of staff and pupils they feel that they can talk to should any issues arise no matter the size. We have a fully trained group of trained Anti-Bullying Ambassadors that work alongside myself in the Academy to ensure pupils feel supported and are on hand to offer any advice if pupils are faced with any issues around bullying.



Miss Bartlett

MISS BARTLETT | YOUNG CARERS

As Young Carers Operational Lead at Smiths Wood I am committed to ensuring that every Young Carer is supported in school. I am lucky enough to have worked with the carers Trust which means I have a clear understanding of the needs of all Young Carers.

We have been successful in creating a supportive community at Smiths wood which is made up of many Young Carers, all different ages. At school we support one another. We have drop in sessions, one to one mentoring and emotional wellbeing support in place for all.

Did you know that 49% of children and young people think that reading is boring or that there is significant correlation between reading enjoyment, reading frequency and reading attainment?

The 'National Literacy Trust' found that 90% of students who only read books at school are either average or below average readers. They go on to say that: "Children who read for pleasure enjoy better opportunities throughout life because they have gained a richer vocabulary, more knowledge, critical thinking skills and a self-directed learning framework."

At Smith's Wood, we have the facilities to improve the reading of every child in the school, but we also need your support. From enjoying family reading time, discussing and reflecting on books you've read together and listening to audio books, there are so many ways that you and your children can enjoy the reading experience.

One in five young people are still entering the workplace without the numeracy skills they need for success. We understand that as a parent/carer you want the best for your child and there are lots of ways you can support his/her numeracy skills at home.

Times tables are a fundamental part of everything that follows in Maths; a child who is confident with his/her times tables is quicker and more confident with the rest of his/her Mathematics. You can help your child by traditional methods such as chanting or testing. Additionally, you can play games to strengthen his/her skills or your child can help you in planning a journey, work out the cooking times for a roast dinner or totalling up your weekly shop at the supermarket. These will all aid to improving your child's numeracy skills and help him/her to see the mathematical links within everyday life.

Our main focus is that all students enjoy their time whilst at Smith's Wood Academy. As a school we offer a variety of opportunities to all students to participate in away from their typical academic lessons.

The House system supports to embody the values and ethos of the school through a community experience for all parties.

When starting at Smith's Wood Academy, students are placed in one of four Houses, Hawking, Luther-King, Pankhurst or Parks. Being part of a House and participating in House events allows students to experience the Academies Core Values; Excellence, Dedication Integrity, Ambition, Tradition through the use of sports, creative arts, academic and charity competitions.

Please refer to our Teaching and Learning page for further details, which can be found on the academy website.

“

"THIS IS SUCH A GOOD SCHOOL, I HAVE LOTS OF FUN. I KNOW YOU WILL ENJOY IT HERE AS THERE ARE SO MANY OPPORTUNITIES." **HARLEY**

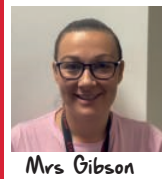


PURPOSE

The House System is designed to embody the values and ethos of the school and aims to be an integral part of our school community; it promotes healthy competition and fosters community spirit.

MRS GIBSON | HEAD OF HAWKING HOUSE

Welcome to Hawking House! We cannot wait to have you as part of our fantastic team, our house is the BEST!(sshhhh don't tell the other houses) we always try our best to occupy the top spot! We will need your help to secure that top spot in next year's competitions. The house system is a great way to meet new people, get involved with a range of different sporting and creative art activities throughout the year. We are a competitive house, but for the right reasons – We are a TEAM! Take part, have fun, and meet new people. Whether you like to sing, run, dance, swim, cook, draw or any other hobbies I can assure you that there will be competitions for you to take part in and help Hawking House be on top!



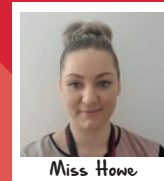
Mrs Gibson



"HOWEVER DIFFICULT LIFE MAY SEEM, THERE IS ALWAYS SOMETHING YOU CAN DO, AND SUCCEED AT". **STEPHEN HAWKING**

HOW TO EARN HOUSE POINTS

Throughout the year there will be many house competitions and events. Students are able to obtain a house point when they represent their house at each competition or event they participate in.

MISS HOWE | HEAD OF PANKHURST HOUSE

Miss Howe



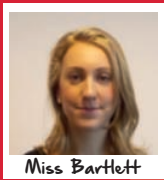
Welcome to Pankhurst house. We are named after the inspirational Emily Pankhurst who bravely stood up for what she believed in, therefore we like to abide by her motto: 'Deeds not words'. Pankhurst is one big family; we are all in it together. The Pankhurst family take part in house competitions throughout the year, ranging from sporting events to creative activities- there is something for everyone and we encourage every student to get involved. Our house colour is yellow, the colour of happiness and optimism. It inspires thought and curiosity, boosts enthusiasm and confidence; all qualities we hope to instil in our students.

MISS WILSON | HEAD OF LUTHER-KING HOUSE

Miss Wilson



Welcome to Luther King House! As well as being a Drama Teacher, I am also your Head of House. Our house is proudly named after an inspirational, hard-working and determined man – Martin Luther King, Jr. In this house, we believe that if we work as a team, we will succeed! We will need your participation in a wide range of house events - whether it's sports or creative arts, there is something for everyone. I hope that you will wear your house colours with pride, and represent your house to the best of your ability, just like I know you can! We strive to participate in every event and support each other to do our very best, so that we can achieve anything we set our minds to.

MISS BARTLETT | HEAD OF PARKS HOUSE

Miss Bartlett



Welcome to Parks House.

At Smiths wood we believe it is important that you always have somewhere you belong. We strive to create a community within school where you can have fun and enjoy activities outside of the classroom. Parks house love to join in the fun! Over the past few years we have had some fantastic baking entries, we have won sports tournaments against the other houses and shown off our creative skills.

As your house leader I am committed to ensuring that every parks member feels happy in school and strive to provide opportunities for you to enjoy competitions and activities.

MR LYNCH | SENDCo

The Inclusion and Access team always work hard to make sure that no student is left behind. The team includes the SENDCo, Assistant SENDCo, a SEND teacher, and a number of teaching assistants.

We support students who have greater difficulty in learning in many ways. These include support in the classroom, small group and one to one sessions, and organising the right extra support from specialists such as Educational Psychologists and Speech Therapists. We also teach small groups of students in Year 7 and 8 in SEND 'Pathways' which cover emotions, care, and relationships in a nurturing environment. This is the maximum of 5 hours per week and is blended with academic lessons.

Our aim is for students with special educational needs to have the support they need to achieve as highly as anyone else in the country. These needs could be physical, emotional, or cognitive and sometimes even a combination of these. Our expert team in school and the specialists we employ from beyond the Academy all have the same goal in mind - meeting each child's individual needs.

Our standards are always high, and we always go the 'extra mile' to offer support to meet these high standards. For young people at Smith's Wood Academy, these standards include their academic work, as well as their attendance, behaviour, safety, and wellbeing.



Mr Lynch

We use the 'Graduated Approach' of Assess – Plan – Do – Review, in response to the needs of a student. A Wave 1, 2 and 3 support approach is provided on the basis of a student's needs and the resources available at the time.

For students with emotional needs, Smith's Wood students can seek support from a number of places. Students can get support from their House Teams, the SEND Team, the Behaviour Support Team, the Designated Safeguarding Lead or Child and Family Support Workers.

For some it may be appropriate to seek additional support from medical professionals and we are able to complete referrals to CAMHs when appropriate. We may also recommend seeking further advice from your GP. Furthermore, we offer a variety of specialist interventions to help support students whose difficulties are more persistent. Where appropriate, we also utilise a wide range of external agencies to help support our more vulnerable students.

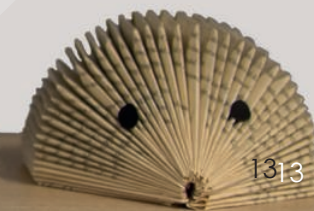
EMOTIONAL WELL-BEING AMBASSADORS

Each Smith's Wood Academy student has access to emotional well-being support/ mentoring via our Emotional Well-being Ambassadors (EWA). Our EWAs are made up of our Year 10 and 11 students who have received mental health and well-being training. Our EWAs are keen to support any student who feels that they will benefit from being peer mentored.

“

"SMITH'S WOOD ACADEMY IS SUCH AN AMAZING SCHOOL. DON'T WORRY IF YOUR CLOSE FRIENDS AREN'T COMING TO SMITH'S WOOD, YOU WILL MAKE PLENTY OF NEW FRIENDS HERE."

ASHLEIGH



POSITIVE RELATIONSHIP AND CONDUCT POLICY

At Smith's Wood Academy, we follow three steps to ensure our behaviour is always excellent: **Connect. Respect. Excel.**

We expect all students and staff to:

Everyone will:

CONNECT

- Smile, say hello, ask how people are.
- Be willing to talk and listen.
- Treat every day as a fresh start.
- Be positive in your approach.
- Get involved in school events to build new relationships.
- Complete restorative conversations when needed.
- Care deeply about everyone in the school.

RESPECT

- Follow instructions first time, every time.
- Follow SLANT.
- Respect other students right to learn and be safe.
- Stay calm - calm voice, open body language, not shouting.
- Be polite - Remember please, thank you, Sir/Miss.
- Move around the building respecting others and the building. Walk, stay left, open doors, bin litter. Be calm and quiet. Keep hands to yourself.

EXCEL

- Arrive on time.
- Arrive equipped.
- Wear the uniform smartly, with pride.
- Take coats off in the classroom.
- Follow the 4 to start/4 to finish in silence.
- Complete all work expected to the best standard.
- Believe you can excel - always try and learn from mistakes.
- Take part in house participation and extra-curricular activities.

Mobile phones should be turned off and put away before entering school gates and only switched on after leaving school premises.



Queue jump pass



Tea and biscuits with the Head of Academy, one friend, one teacher



Invitation to end of term rewards event



Postcard home

REWARDS

We believe that students having a positive attitude to their work and respecting all learners in the classroom will ensure that they are learning effectively and will stand them in good stead for all future employment and further education.

At Smith's Wood Academy we like to recognise and praise students for their achievements in areas of effort, progress and participation.

Rewards include:

- Postcards and letters home
- Carrot Reward stickers - more points = more rewards
- Golden Table
- Half-termly rewards assembly
- 100% attendance activities and events

CONSEQUENCES

When students do not meet our expectations, they will be supported to meet the expectations in the future. Students will often be issued verbal warnings before consequences are given to help support them to meet our expectations.

During lessons teachers will issue a level 1 and 2 which are verbal warnings to students to stop any behaviour which is not meeting our expectations. If a student receives a level 3 this results in a 20 minute next day detention. If the behaviour continues this will lead to a level 4 which is removal from the classroom and a 40 minute detention. If the behaviour warrants it we may also use 1 hour detentions, time in our internal isolation room or exclusions from school.

Certain items are banned in the academy (phones, earpods, sugary/fizzy drinks, hoodies, Jewellery (other than one small studded earrings). If students bring these items into school they will be confiscated and returned at the end of the day.

Please refer to our Behaviour and Discipline Policy for further details, which can be found on the academy website.

We aim to ensure that all students attend school regularly and on time to enable them to take full advantage of the educational opportunities available. Regular, punctual attendance is valued and positively encouraged for all of our students.

Attendance Aims

- To ensure that all students have at least 97% attendance.
- To improve students' attainment through good attendance.
- To encourage parents to ensure that their children arrive at school on time.
- To make attendance a priority for all those associated with the school, including parents, students, teachers and governors.

“

“ATTENDANCE TO SCHOOL IS IMPORTANT. IF YOU HAVE GOOD ATTENDANCE, YOU GET REWARDED. THE LESSONS ARE REALLY FUN.”

HARRY



Attendance Partnership Expectations

We expect the following from all of our students:

- To attend school regularly;
- To arrive on time and appropriately prepared for the day, having eaten breakfast;
- To tell a member of staff about any problem or reason that may prevent them from attending school.

We expect the following from parents and carers:

- To ensure their children attend school regularly and punctually;
- To ensure contact is made with the Academy, by 8:30, whenever their child is unable to attend;

Parents and students can expect the following from school:

- Early contact with parents when a pupil fails to attend school without providing good reason;
- Regular, efficient and accurate recording of attendance;
- Follow up support if needed.

Please refer to our Attendance Policy for further details, which can be found on the academy website.

Smith's Wood Academy is committed to the highest standards prioritising above all else the protection of the children entrusted to our care.

What will we do if we have a concern about your child?

If we are concerned that your child may be at risk of abuse or neglect we must follow the procedures in our Safeguarding and Child Protection Policy. A copy of this can be found on our web site.

The procedures have been written to protect all students; they comply with our statutory responsibilities and are designed to support students, families and staff. The procedures are based on the principle that the welfare of the child is the most important consideration.

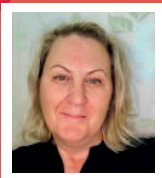
In almost all circumstances, we will speak to you about our concerns as well as inform you if we feel we must refer our concerns to the Children's Social Care Team. We will request your consent to put forward a referral, but in some circumstances we may need to make the referral against your wishes. We will only do this if we genuinely believe that this is the best way

to protect your child, and it will be recorded that you did not provide consent for the referral. If we determine that contacting you in the first instance may jeopardize the situation, we will report our concerns to the Children's Social Care Team and await further advice. We will normally tell you that a referral is being made and will record the reasons why we decided to follow this course of action.

All child protection records are kept securely and filed separately from your child's general school file. The only staff that have access to these records are those who need to be informed about the concerns in order to protect and support your child.

Child protection is an extremely sensitive issue; it raises many questions and a range of strong emotions. We will ensure we do everything we possibly can to support our students and would like to assure you that any action taken will be in the best interests of your child.

Mrs Phillippa Brookes
Senior DSL (Designated
Safeguarding Lead) at
Smith's Wood Academy



If you wish to share any concerns with the Safeguarding Team please email safeguarding@smithswood.fmat.co.uk, alternatively please call **0121 788 4100** and follow the recorded options.

Students are encouraged to develop a culture of 'Tell someone'. All Academy staff are trained to recognise and respond to reports of abuse or neglect.

We actively encourage all students to feedback their progress to parents/carers on a daily basis. If you have any concerns, please do not hesitate to contact your child's form mentor by emailing office@smithswood.fmat.co.uk.

At the beginning of the year you will receive a list of important dates which will include:

- Year 7 Information Evening.
- A parent meeting with subject teachers in the spring term.
- A full report which summarises progress and targets for improvement.

We find that e-mail is our most effective method of communication to relay information such as: student reports, trip letters, school events etc. To receive up-to-date information please ensure you provide us with your email address when completing your child's admissions booklet.

It is imperative that you notify the school of any changes to contact details immediately. This includes mobile/landline numbers, email address and home address.



At Smith's Wood Academy we believe in the importance of taking pride in our appearance and in representing ourselves and the Academy in a positive manner at all times; including on the way to and from school.

We believe that wearing the correct uniform sets the standards for learning, conveys the positive image that the Academy warrants in the local community and also ensures that staff are able to focus

their attention on students' learning. In the same way many employers expect their staff to wear a uniform, we expect our students to wear the Smith's Wood Academy uniform correctly each and every day.

It is well known that students misplace items and we urge parents/carers to clearly label all of their child's property with their full name. We advise that items of value should not be brought into school.

Our authorised uniform suppliers are Clive Mark and Crested School Wear. All items with Academy logos will need to be purchased from these companies. Orders can also be made online.

Clive Mark

2286 Coventry Road
Sheldon
Birmingham
B26 3JR

☎ 0121 722 2286

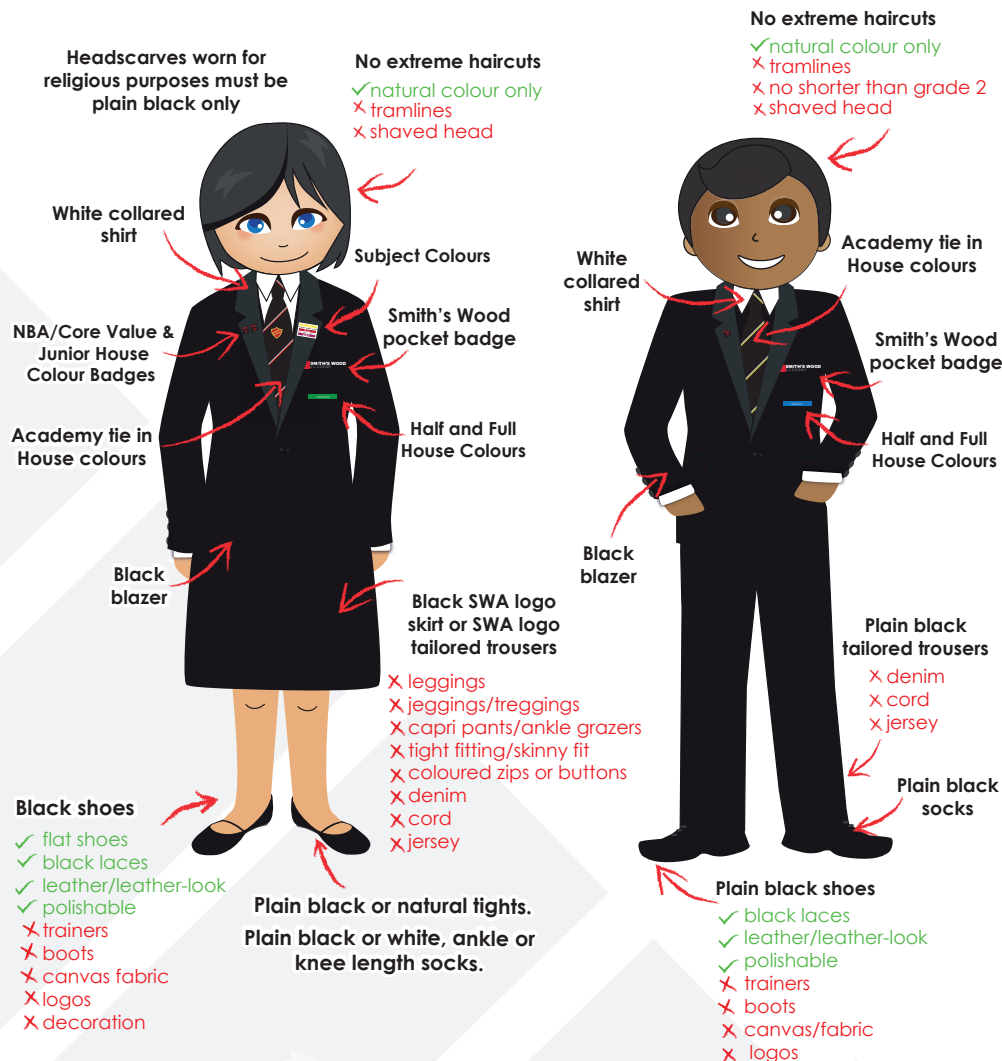
🌐 www.clivemark.co.uk

Crested School Wear

28 High St (next to Wilton Market)
Erdington
Birmingham
B23 6SA

☎ 0121 350 8444

🌐 www.crestedschoolwear.co.uk



School Bag with Smith's Wood logo



EQUIPMENT LIST:

- Black or blue pen
- Green pen
- Pencil
- Ruler
- Accelerated reading book
- Ethos card
- Knowledge organiser folder
- Study book

NO PIERCINGS!

We allow **one small metal stud** in each ear. Any other body piercings are unacceptable.

One watch only - no other jewellery.

No smart watches.

HOUSE TIES





**SMITH'S WOOD
ACADEMY**

**SMITH'S WOOD
ACADEMY**

Mr Richard Cornell | Acting Head of Academy

📍 Smith's Wood Academy, Windward Way, Smith's Wood, Birmingham B36 0UE

☎ 0121 788 4100 ✉ office@smithswood.fmat.co.uk

🌐 www.smithswood.co.uk