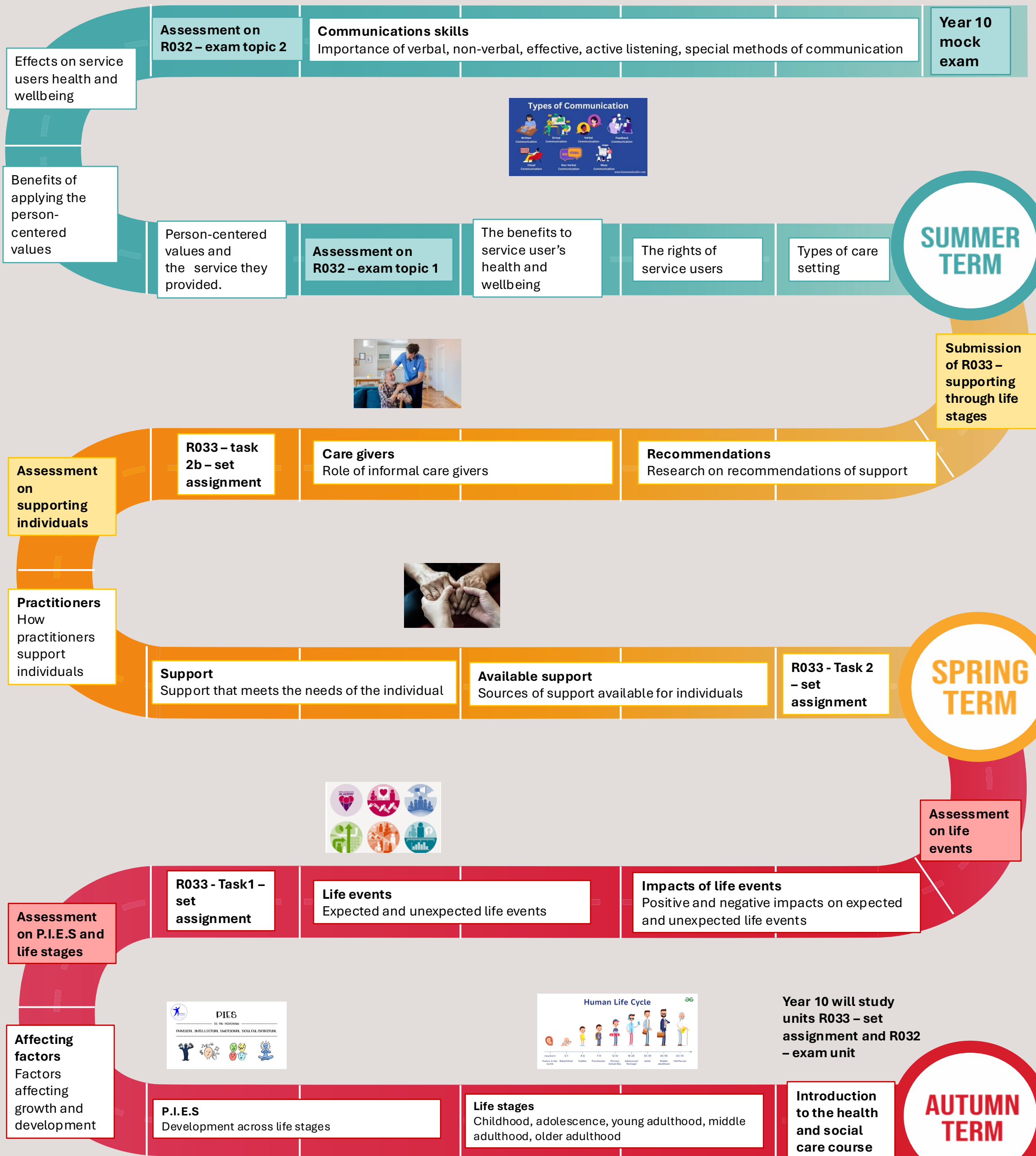


SMITH'S WOOD LEARNING JOURNEY

Year 10 Health and Social Care



SMITH'S WOOD LEARNING JOURNEY


Year 11 Health and Social Care

Apprenticeships in child development, child care

A04 – Final outcome
5 hour Mock exam

A levels in health and social care

College course in health care industry

Life after Smith's Wood Academy 

SUMMER TERM





R032 -Final exam

Security
How security measures protect service users and staff

Revision
Exam questions

Assessment





SPRING TERM

Procedures
Safety procedures and measures

Infection and prevention

safeguarding
Managing the wellbeing of individuals

Submission of R035 – set assignment





Healthy lifestyle
Benefits and barriers to a healthy lifestyle

R035 – task 2 – set assignment

Health campaign
How to plan, deliver and evaluate a health campaign

Delivery of health campaign

Year 10 will study units R035 – set assignment and R032 – exam unit

Factors
Influencing health and wellbeing leading a healthy lifestyle

R035 – task 1 – set assignment

Health changes
Public health challenges for society

Healthy society
Importance of a health society

Public health
Current public health issues

Introduction to R035 coursework

AUTUMN TERM

