

# SMITH'S WOOD LEARNING JOURNEY

## Year 7 Religious Education



**Worship: Buddhism** | **Revision** | **Revision** | **End Topic Assessment** | **Assessment Feedback**

**Worship: Hinduism**

**Worldwide Worship**  
You will study in detail how worship is practiced in the six main world religions.



**Worship: Sikhism**



**Worship: Islam** | **Worship: Christianity** | **Worship: Christianity** | **Worship: Judaism** | **Worship**



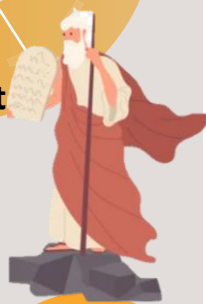
**SUMMER TERM**

**Abrahamic Faiths**  
You will study Jewish, Christian and Muslims views about Jesus and what we can learn from him.

**Assessment Feedback**

**Jesus' Miracles** | **Jesus' Teachings** | **Jesus' Teachings** | **Jesus: Rebel Vs Peacemaker** | **Revision** | **End Topic Assessment**

**Abrahamic Faiths**  
You will study great covenants from stories which plays key parts in Jewish, Christian and Islamic texts.



**Jesus: God, Prophet or a Wise Man**

**Jesus: God, Prophet or a Wise Man** | **Prophethood: Moses** | **Prophethood: Moses** | **Prophethood: Noah** | **Abraham's Covenant**



**SPRING TERM**

**Our Religious Community**  
You will consider the place of religion by analysing census data and creating your very own newspaper article on the state of religion in the UK.

**Assessment Feedback**

**The 6 major world religions; Festivals** | **The 6 major world religions; Festivals** | **The 6 major world religions; Pilgrimage** | **Do we live in a Secular Age?** | **Revision** | **End Topic Assessment**

**Our Religious Community**  
You will be introduced to the main world religions, key beliefs and how they are practiced within our community.

**The 6 major world religions; Festivals**

**The 6 major world religions; Golden Rules** | **The 6 major world religions; Key Features** | **The Existence of God** | **The Existence of God** | **Being Religious**

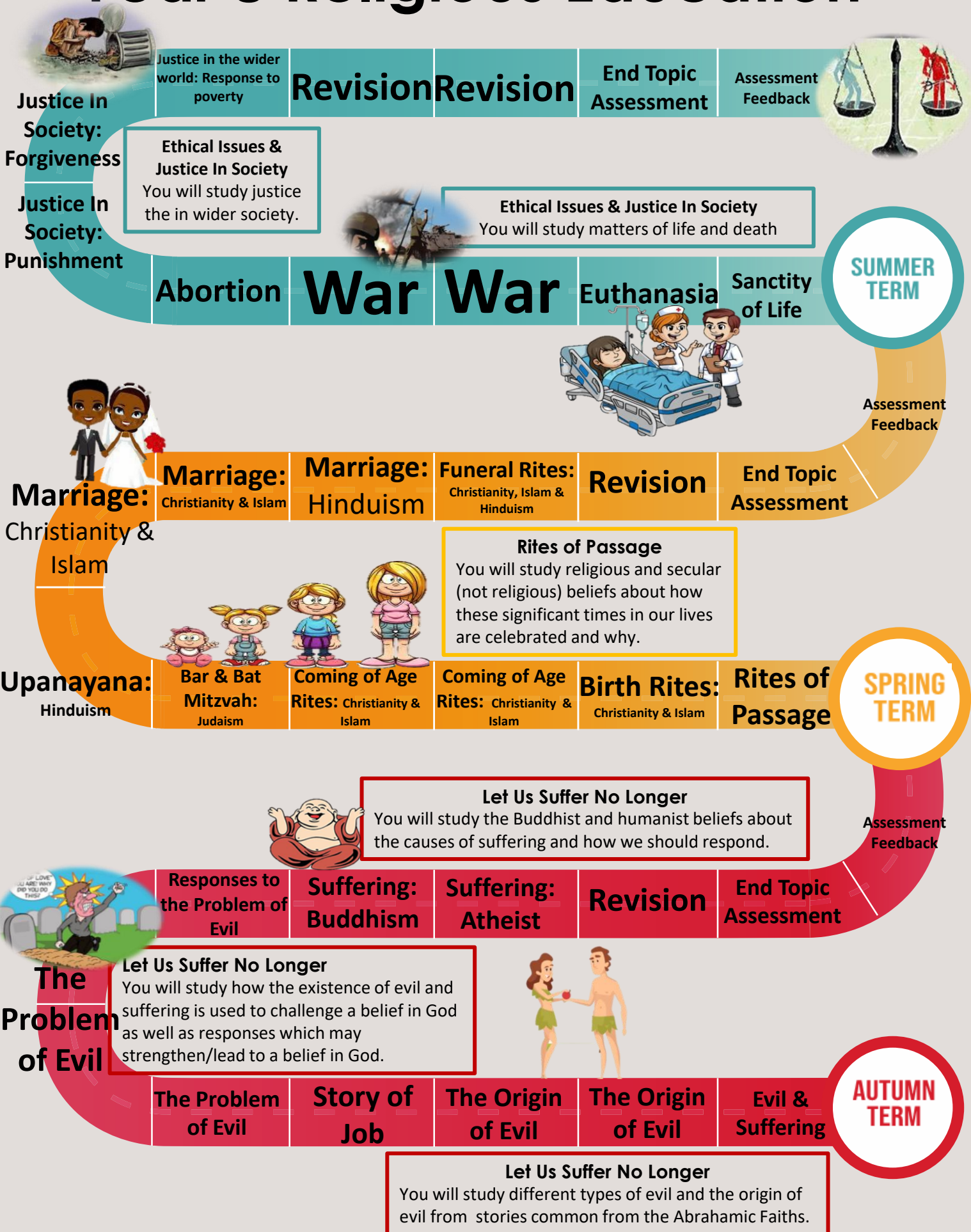


**AUTUMN TERM**

**Our Religious Community**  
You will consider BIG questions such as; 'What makes a person religious?' 'Is there a God?' that are central to religions and worldviews.

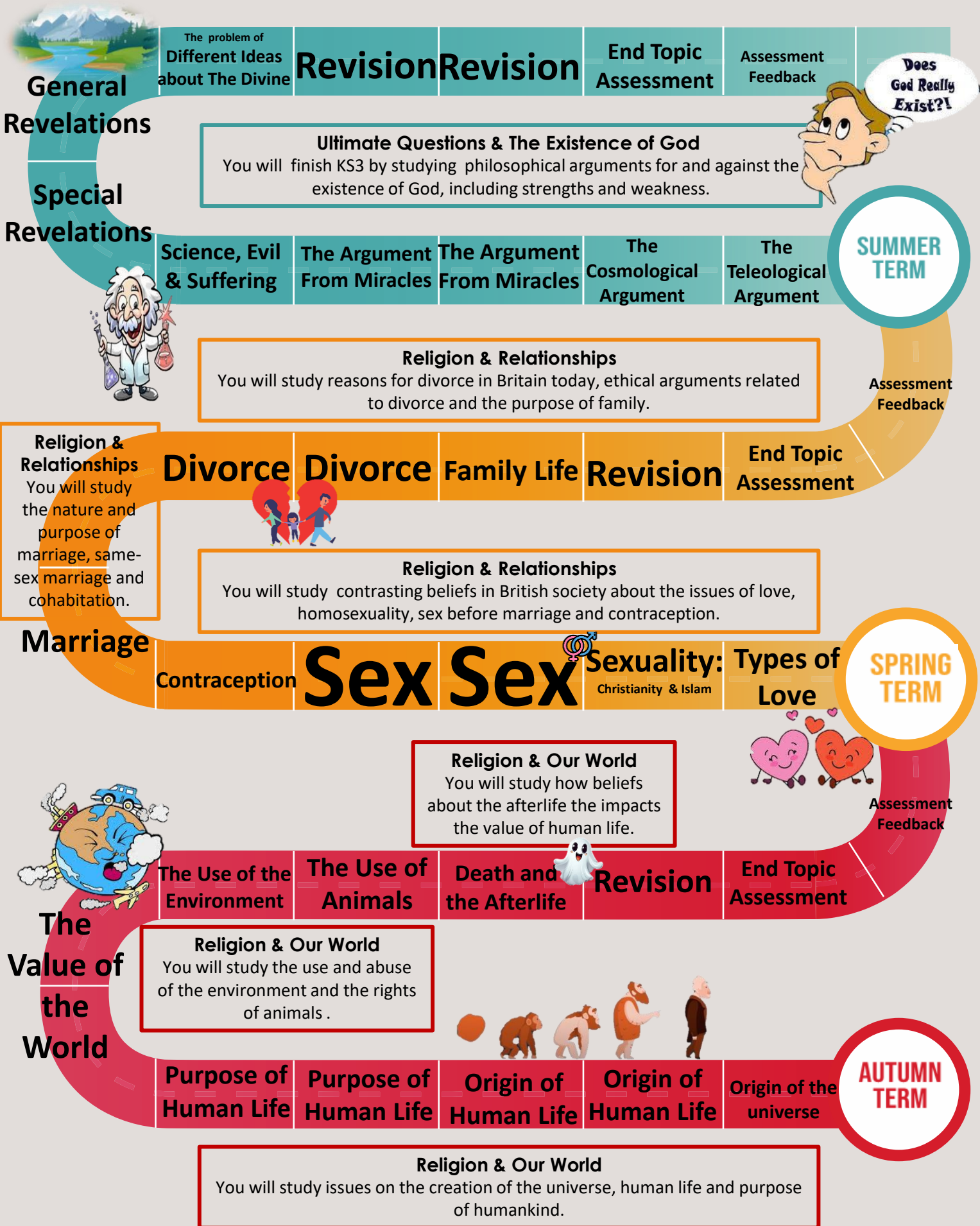
# SMITH'S WOOD LEARNING JOURNEY

## Year 8 Religious Education



# SMITH'S WOOD LEARNING JOURNEY

## Year 9 Religious Education



Does God Really Exist?!

SUMMER TERM

Assessment Feedback

End Topic Assessment

SPRING TERM

Assessment Feedback

AUTUMN TERM

# SMITH'S WOOD LEARNING JOURNEY

## Year 10 Religious Education



PSHE

<b>The Law</b>	<b>Reasons for Crime</b>	<b>Types of Crime</b> Attitudes to lawbreakers	<b>Aims of Punishment</b>	<b>Suffering &amp; Causing Suffering to Others</b>	<b>Treatment of Criminals</b>
----------------	--------------------------	---	---------------------------	--	-------------------------------

**Religion & Crime**  
You will study the legal position of crime and punishment including the reasons why people commit crimes.

**Religion & Crime**  
You will study different attitudes towards lawbreakers, the purpose of punishment and how criminals should be treated.

PSHE PSHE PSHE PSHE PSHE

SUMMER TERM

**Religion & Conflict**  
You will study religious discrimination and whether it still exists today as well as attitudes towards violent protest, terrorism and extremism.

Extremism

<b>Religious Conflict</b>	<b>Religious Discrimination</b>	<b>Violent Protest</b>	<b>Terrorism</b>	<b>War</b>
---------------------------	---------------------------------	------------------------	------------------	------------

**Religion & Conflict**  
You will study whether religion is a cause for conflict including examples of when religion has caused conflict.

PSHE

PSHE PSHE PSHE PSHE PSHE

SPRING TERM

**Is it Fair? Religion & Human Rights**  
You will study attitudes towards prejudice and discrimination including the status and treatment of women.

Exploiting The Poor

<b>Social Justice &amp; Human Rights</b>	<b>Prejudice and Discrimination</b>	<b>Race &amp; Disability</b>	<b>Gender Equality</b>	<b>The Use of Wealth</b>
--	-------------------------------------	------------------------------	------------------------	--------------------------

**Is it Fair? Religion & Human Rights**  
You will study what is meant by human rights and the responsibilities that come with rights including respecting the rights of others.

**Is it Fair? Religion & Human Rights**  
You will study attitudes towards the use of wealth and the problem of exploitation of the poor including issues related to fair pay and people trafficking.

PSHE

PSHE PSHE PSHE PSHE PSHE

AUTUMN TERM

