



SMITH'S WOOD ACADEMY



SMITH'S WOOD
ACADEMY

INDUCTION BOOKLET
2026-27

PART OF THE FAIRFAX MULTI-ACADEMY TRUST





CONTENTS

WELCOME FROM THE CEO



Mr Simon Jones | CEO

We are delighted that you are considering sending your child to Smith's Wood Academy. Smith's Wood is one of a family of four academies that form the Fairfax Multi-Academy Trust (FMAT).

Established in 2014, FMAT is an educational charity, which encourages its academies to celebrate their own uniqueness, whilst sharing one mission, vision and set of values.

Our mission is "Enriching Lives; Transforming Futures". We achieve this by ensuring all of our students access a broad and wide-ranging curriculum, while being supported in a structured, kind and caring environment.

Our vision is that every child within the Trust, regardless of their background, will attend an Academy that offers a high-quality education.

What do we mean by 'high-quality of education'?

Every child is recognised as an individual and has access to first-class pastoral care because we want your child to be happy;

Every child benefits from a wide range of enriching opportunities because we place great emphasis on your child's personal development;

Every child benefits from dedicated leaders, teachers and staff who are relentless in their ambition to improve the quality of teaching in our academies because we know excellent teaching is key to transforming the futures of our students.

OUR VISION

ENRICHING LIVES; TRANSFORMING FUTURES

OUR VALUES

Our family is a values led organisation. The following values underpin all of the work we do:



EXCELLENCE

We strive for the highest quality to ensure excellent outcomes and personal achievements.



DEDICATION

We believe there is dignity in hard work and effort.



TRADITION

We believe in good manners, kindness and respect.



INTEGRITY

We believe in openness, honesty and have a real sense of moral purpose.



AMBITION

We aim to be the best that we can be, in all that we do.



“A new principal, supported by an experienced leadership team, has reinvigorated pupils’ motivation to attend school and learn.” *Ofsted 2026*



A very warm welcome to Smith’s Wood Academy. We are delighted that your child will be joining our School community and we look forward to supporting them as they develop both academically and personally during their time with us.

We understand that the transition to secondary school is an important milestone for both students and families. Our aim is to ensure that every child feels happy, safe and supported from the very beginning, enabling them to settle quickly and make the most of the many opportunities available to them.

At our school, we are extremely proud of the journey we are on. Over recent years, the school has continued to move from strength to strength and is now recognised as one of the most improved schools in the West Midlands.

Our recent Ofsted inspection highlighted the significant improvements made across the Academy and reflected the dedication, ambition and hard work of both staff and students.

We are determined to provide every opportunity for students to be successful at SWA. Alongside achieving strong academic outcomes, we place great importance on developing confident, respectful and resilient young people who are prepared for the future. Our values ‘Respectful, Resilient and Ambitious’ underpin everything we do and help create a culture where students are encouraged to work hard, show kindness and take pride in themselves and their achievements.

MRS HUNTINGTON
PRINCIPAL

WELCOME FROM THE PRINCIPAL

INTRODUCTION

The purpose of this booklet is to provide you with information to help put your mind at ease for the upcoming transition of your child's education at Smith's Wood.

We would like to invite your child to attend a transition day taking place on **Thursday, 2 July and Friday 3rd July**. During this day, your child will be involved in various activities to help familiarise themselves with the school and the teachers. They will also have the opportunity to meet with their Achievement Leader, Form Tutors and the SEND team.

Please ensure that your child arrives at Smith's Wood Academy ready for 9.15am wearing their current primary school uniform and meets in the Reception area. Students will finish school at 2.30pm and we ask that you collect your child.

On both Transition Days your child will need a packed lunch and you may wish to provide your child with a small healthy snack and drink of water for break time. They will need their usual school bag containing basic writing equipment.

Students should arrive in their primary school uniform on both days with trainers for PE related activities.

☎ 0121 788 4100

✉ office@smithswood.fmat.co.uk

🌐 www.smithswood.co.uk



“

The school is a friendly, respectful community where pupils can be themselves.”

Ofsted 2026



STUDENT SUPPORT

Your child is encouraged to report to the Year 7 Office where a member of the year team will be able to help, if they have any concerns.

We do our utmost to ensure that your child is happy and safe at Smith's Wood Academy and that you share these feelings. Your child is encouraged to report any concerns to their form tutor in the first instance and where necessary, the year team will be on hand to support with this.

If you have any further concerns, please contact your child's Form Tutor in the first instance and they will be able to assist with your concern or will refer to Mr Molloy, Achievement Leader..

We do our best to prevent issues occurring and we will deal with concerns as quickly and thoroughly as possible. If you wish to speak to a member of staff in person, please bear in mind that due to teaching commitments it is not always possible to meet with a staff member without making an appointment. Please contact the school to arrange this.

“

“Pupil's feel safe and well looked after.”

Ofsted 2026

YEAR 7 STUDENTS WILL STUDY:



ENGLISH



MATHEMATICS



SCIENCE



ART



COMPUTING



DANCE



DRAMA



GEOGRAPHY



HISTORY



MUSIC



PHYSICAL
EDUCATION



PSHE



RELIGIOUS
EDUCATION



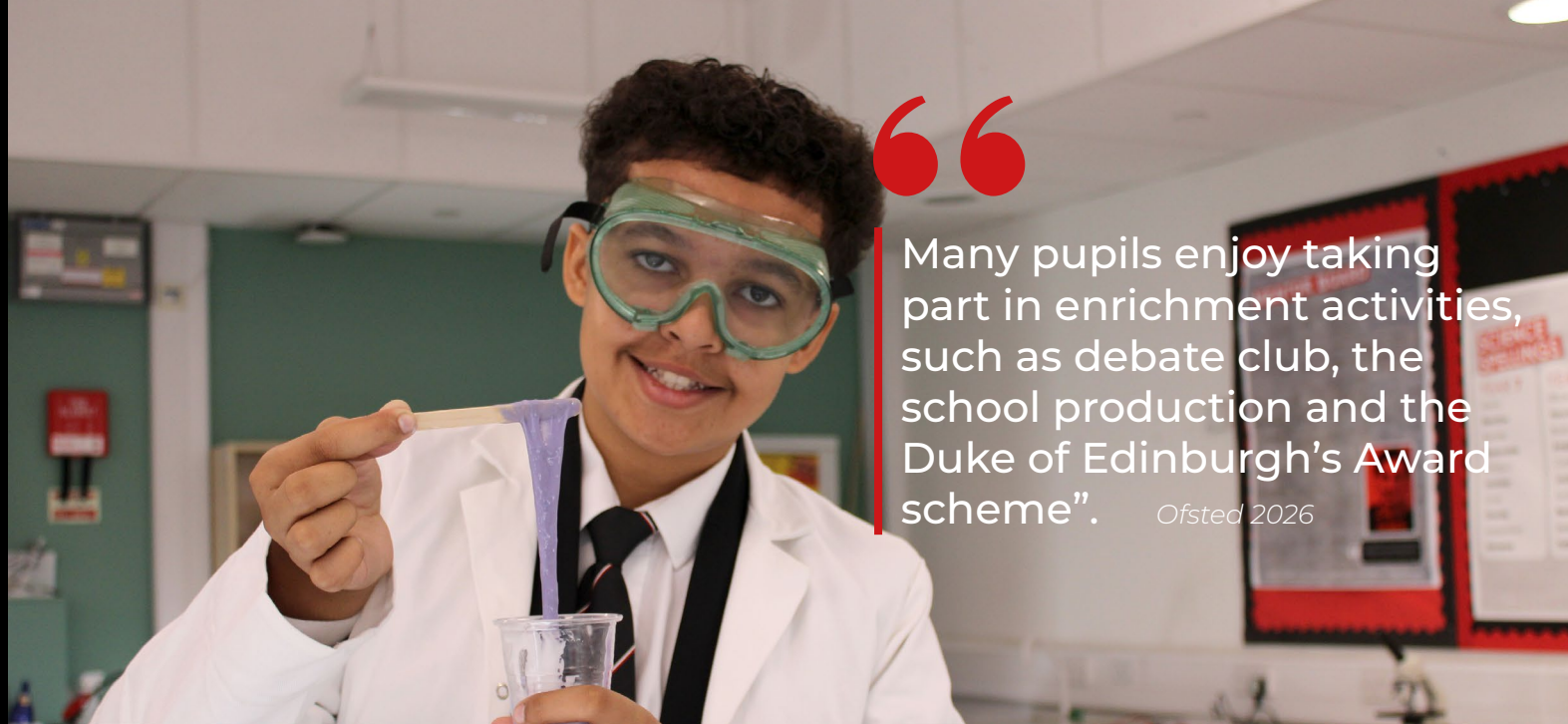
SPANISH



TECHNOLOGY

Pupils typically receive the additional support that they need, so they can access the curriculum.

Ofsted 2026



Many pupils enjoy taking part in enrichment activities, such as debate club, the school production and the Duke of Edinburgh's Award scheme". *Ofsted 2026*

One of the biggest changes that students experience when transitioning from primary to secondary is the movement around the building and being taught by a range of teachers. We hope students will be excited by this change as it gives them the opportunity to be taught by subject experts in purpose built facilities.

Our lessons are one hour in length and students will study a range of subjects across 25 periods per week.

We use KS2 data in addition to reading age scores to set students for core subjects (English, Maths and Science) based on their attainment. Set

changes take place during the year to ensure that all students are in a set which matches their current progress. Regardless of which set a student is placed in, we expect students to live our school values in all lessons, being 'Respectful, Ambitious, Resilient'. Students will be taught in mixed attainment groups for all other subjects.

We do provide students with a 'Ready to Learn' pack free of charge when they join us in Year 7. We expect students to arrive at lessons fully equipped and ready to learn. If you are purchasing a calculator, we recommend the Casio FX 83 model.

Students will study PSHE (Personal Social, Health & Economic) throughout their five years with us. This is a vital subject which prepares our students for life after Smith's Wood, enabling them to make a positive contribution to society. Within these lessons, students will cover Relationships & Sex Education (RSE) along with an excellent careers programme.

There are a huge range of exciting extra-curricular opportunities. Further details regarding the extra-curricular opportunities will be published in September and updated each term.

MEET THE SEND TEAM

At Smith's Wood we understand the importance of pupil and parent voice when shaping the support in place at school. Your allocated key worker will work closely with you to create a 'pupil passport'. This will identify precise strategies to support each student when in lessons.

We understand that students are on a journey here at Smith's wood, a graduated approach is used to remove any barriers to learning.

Our SEND team offers different interventions and support: In-class support, ELSA, SNIP handwriting, drawing and talking, sensory circuits, numeracy and literacy intervention designed to support students with dyslexia and flash academy supporting EAL students.

Our SEND hub acts as an academic base during the school day and is staffed by our keyworkers to ensure every SEND student has a point of contact throughout the day.



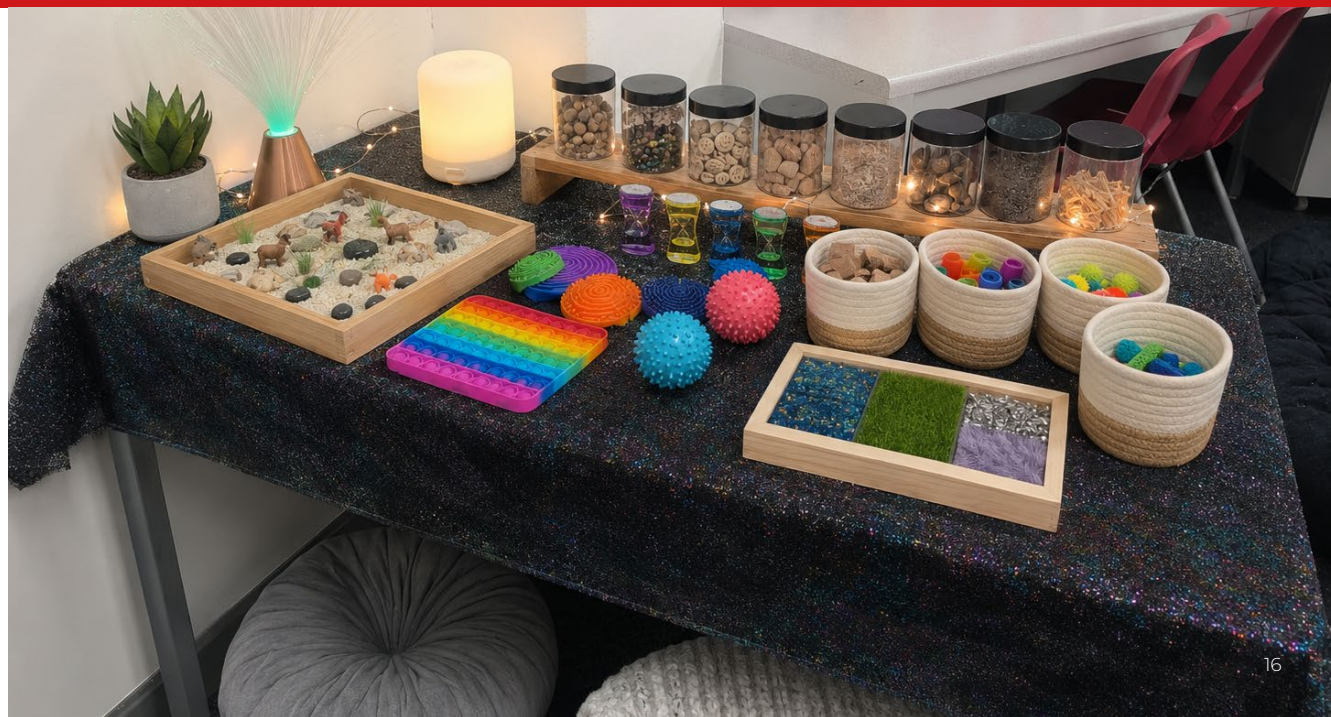
Meet our Y7 SEND
Transition Lead
Miss Chester

Starting secondary is a big change and it is completely natural to feel excited, nervous or even a little unsure about what to expect. As part of the SEN Team at Smith's Wood Academy, I want to reassure our Year 6 students and their families that we are here to support you throughout your transition journey. We take the time to get to know each student as an individual, working closely with primary schools and families to understand what helps them feel happy, confident and successful. Whether that means additional visits, extra support or simply having someone to talk to, we are committed to helping every child settle in and feel a real sense of belonging.



"The school uses research-based strategies and collaboration with other providers to review which strategies are the most effective to remove barriers for these pupils. These approaches are starting to have a positive and successful impact."

Ofsted 2026





Meet our Head of Inclusion
Mrs Douglas

Mrs Douglas is committed to ensure Smith's Wood is a place where every child belongs and thrives, regardless of background ability, disability or need.

By choosing Smith's Wood, you as a parent are choosing an inclusive school, which means choosing an environment where you know your child will be truly accepted, supported and celebrated for who they are.



Meet our SEMH Coach
Miss Chester

In September we will be opening the doors to our Inclusion Base.

Our Inclusion Base provides a calm environment where students can regulate their emotions, build resilience and access additional help to support them to thrive throughout their secondary school journey.

Our SEMH (Social, Emotional and Mental Health) Coach supports students with their emotional wellbeing and mental health needs through a range of interventions, including

- ▶ Zones of Regulation,
- ▶ CBT strategies,
- ▶ Behaviour/Accountability programmes and
- ▶ 1:1 wellbeing sessions.

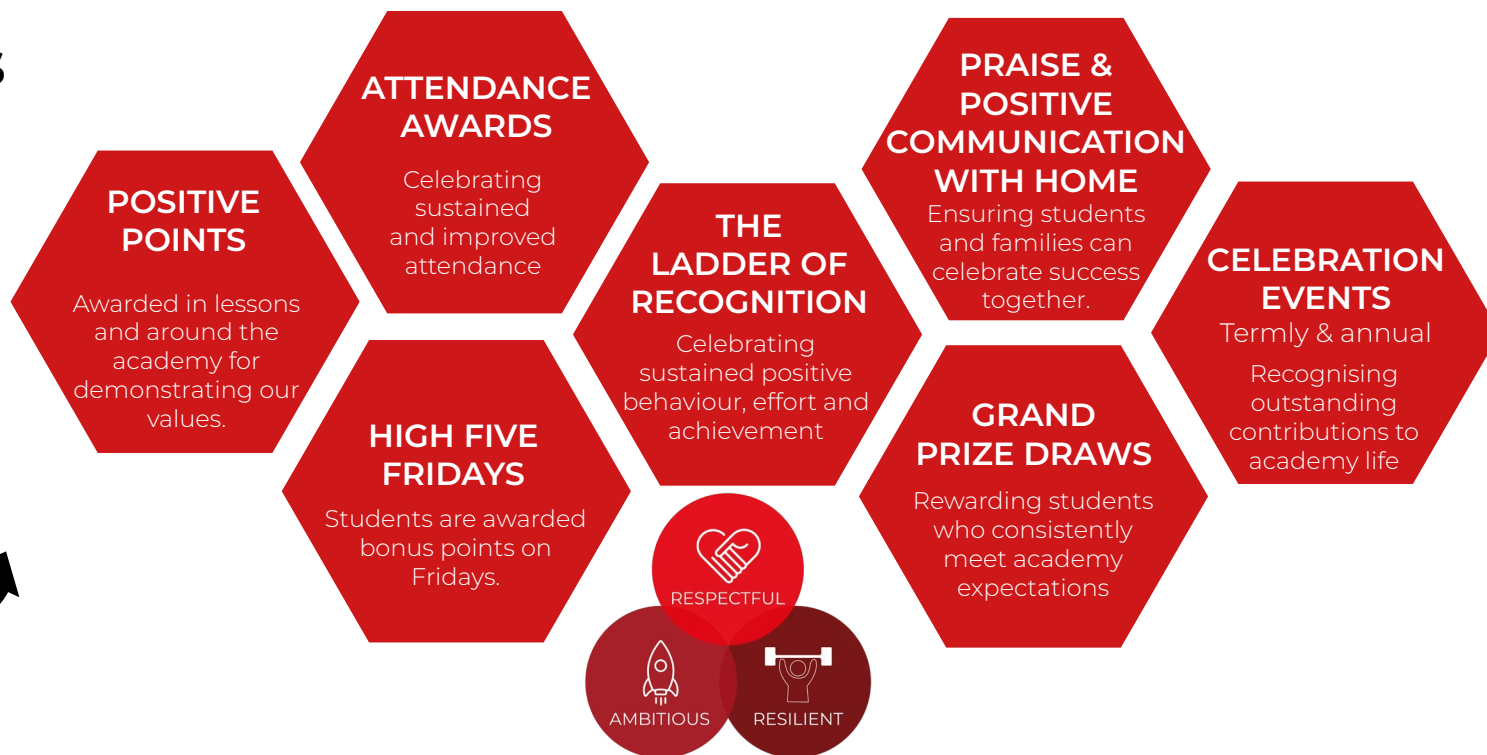


“Pupils who experience barriers to their learning or wellbeing, including those who are disadvantaged or pupils who speak English as an additional language are generally supported well.” *Ofsted 2026*



RECOGNISING AND REWARDING SUCCESS

At Smith's Wood Academy, we believe that recognising positive behaviour, effort and achievement allows students to develop confidence, motivation and a sense of pride in their successes. Our reward system is designed to not only celebrate achievements but also make school an enjoyable experience for all. Students are rewarded regularly for demonstrating our academy values, excellent attendance and commitment to learning through a range of incentives, including:



By celebrating success both inside and outside the classroom, we help create a positive culture where students can thrive and be their best self.



Levels

At Smith's Wood Academy we use a levelling system for negative behaviour. If a student displays inappropriate behaviour, he/she will be issued consequences which are used by all staff and are listed below:



Verbal warning

Recorded by the teacher



**Final verbal warning -
Reset Conversation**

Recorded by the teacher. Any further transgression will lead to a L3.



Mobile phones, mp3 players/ iPods, earphones, will be confiscated if they are seen and heard anywhere in school. A detention will be issued.



30 minute detention

Detention will take place the same day (or next day if issued after 2.00pm).

Two L3s on the same day will be a **45 minute detention.**

Three or more L3s will be a **60 minute detention.** A message will be sent, where possible, advising parents/carers of detentions.

Detention

Attendance to detentions is a non-negotiable. Detentions are issued when a student makes poor choices. Non-attendance results in the sanction increasing which could result in a longer detention or I.S.

Removal from lesson(s)

For serious offences or persistent disruption to teaching and learning, students will be removed from the lesson.

Resolution

The Resolution room is a supervised space used to support students throughout the school day. Students may be placed in the Resolution room by their Achievement Leader or SLT (Senior Leadership Team) on a temporary basis for a variety of reasons, including pastoral support, loss of social time or targeted interventions. The room provides a calm and structured environment where students can receive support and re-engage successfully with their learning. Unlike Internal Suspension (IS), the Resolution room is not a sanction area and is primarily focused on support, intervention and resolving barriers to learning.

Internal Suspension (I.S)

Our Internal Suspension room is the highest internal sanction.

Students are placed in there for serious incidents, persistent defiance and complete interventions following a suspension.

The I.S day concludes at 4pm.

Suspension

A suspension is a formal sanction used in response to serious breaches of the school's behaviour policy. During the suspension period, the student is not permitted to attend school and will be expected to complete work remotely online, which will be provided by the school. Suspensions are issued for a specified period of time and are used when the severity of an incident requires a temporary removal from the school environment.

Permanent Exclusion

A permanent exclusion is the most serious sanction and results in a student losing their place at the school. It is only used in exceptional circumstances where a student's behaviour represents a serious breach of the school's behaviour policy.

Please refer to our Behaviour and Discipline Policy for further details, which can be found on the academy website.

At Smith's Wood Academy, regular attendance and punctuality are essential. Students achieve their best when they attend school every day, arrive on time and are ready to learn. Excellent attendance supports academic success, wellbeing, confidence and positive relationships. **Every lesson matters**, and time missed from school is learning that cannot always be recovered.

Our Attendance Expectation

We expect every student to achieve at least **97% attendance**.

This means no more than four days of absence across the academic year.

Students who attend school regularly are more likely to achieve their full potential, build positive friendships, participate fully in school life and develop the habits needed for future success.

Reporting an Absence

If your child is unable to attend school, a parent or carer must contact the school before 8am on the first day of absence and provide a reason.

Absences can be report by:



Calling the absence line
0121 788 4100 (option 1)



Using the app
My Child at School (MCAS)

Our Attendance Team and Attendance Champion monitor attendance closely and will work with families where attendance becomes a concern. If you need support or would like to discuss your child's attendance, please contact the Attendance Team.

It is important to understand that absences are classified by the school, not by parents or carers, as either authorised or unauthorised. A reason must therefore be provided for every absence.



“Significant and ongoing work to improve attendance for pupils, including those who may face barriers to their learning or wellbeing is proving successful..” *Ofsted | 2026*

Illness and Medical Appointments

Not every illness requires time away from school.

For minor illnesses such as coughs, colds, headaches, sore throats or earache, we would normally expect students to attend school. If a student becomes unwell during the day, we will contact home if necessary.

Where attendance is a concern, or where there are repeated absences due to illness, the school may request medical evidence to support future absences.

Medical and dental appointments should be arranged outside school hours wherever possible. Where this is not possible, parents and carers should inform the school in advance and provide evidence of the appointment.

Leave of Absence During Term Time

The Department for Education does not permit family holidays during term time except in exceptional circumstances.

Please refer to our Attendance Policy for further details

Every lesson matters.



Working together

Good attendance is a shared responsibility between home and school. We want to work positively with students and families to remove barriers to attendance and provide support wherever possible.

Smith's Wood Academy works closely with the Local Authority, external agencies and other North Solihull secondary schools to promote excellent attendance and ensure every child receives the education they are entitled to.

Where attendance concerns persist, the school and partner agencies may work together to provide additional support and intervention. In some cases, the Academy may seek advice from Children's Services if there are concerns that a child's education is being neglected.

If your child is finding it difficult to attend school, please contact us as early as possible. Attendance concerns are often easier to address when support is put in place quickly. Avoiding school can make difficulties harder to overcome and may lead to further attendance concerns.

We would always encourage families to talk to us early so that we can work together to identify barriers and agree the right support for your child.

If you are worried about your child's attendance, please contact our Attendance Champion Mrs Yazmin Gardner by emailing:

**y.gardner@smithswood.
fmat.co.uk**

Punctuality

Students are expected to arrive at school on time every day, ready to learn.

Students who arrive after 8.35am must enter through the late gate and will be recorded as late. Students who arrive after the register has closed, without a valid reason, will receive a 'U' code, which is recorded as an unauthorised absence.

Parents and carers should be aware that accumulating 10 sessions of unauthorised absence, including repeated 'U' codes, may result in a penalty notice being considered.

Being late to school has a significant impact on learning. Students who arrive late often miss important messages, lesson introductions and key instructions that help them understand and engage with their learning. Many students

also find it uncomfortable arriving after their classmates, which can affect their confidence and make it harder to settle quickly into the lesson.

Even a few minutes of lost learning each day soon adds up over the course of a term and academic year. Arriving on time helps students start the day positively, feel prepared and makes the most of every lesson.

Persistent lateness will be monitored and followed up by the school. Repeated lateness may result in sanctions, including after-school detention.

Please refer to our
Attendance Policy
for further details

Arriving on time helps students start the day positively.



Smith's Wood Academy is committed to the highest standards in protecting the children entrusted to our care. We recognise that some children may be the victims of, neglect, physical, sexual and emotional abuse. Staff working with the children are well placed to identify such abuse.

What will we do if we have a concern about your child?

Families and children sometimes go through difficult and challenging times. For the vast majority of concerns we will work with you consensually to support you and your family with any issues. However if we are concerned that your child may be at risk of abuse or neglect we must follow the procedures in our Safeguarding and Child Protection Policy. A copy of this can be found on our website.

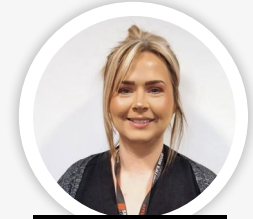
The procedures have been written to protect all students; they comply with our statutory responsibilities and are designed to support students, families and staff. The procedures are based on the principle that the welfare of the child is the most important consideration.

In almost all circumstances, we will speak to you about our concerns as well as inform you if we feel we must refer our concerns to Children's Services. We will request for your consent to put forward a referral, but in some circumstances we may need to make the referral against your wishes. We will only do this if we genuinely believe that this is the best way to protect your child, and it will be recorded that you did not provide consent for the referral. If we determine that contacting you in the first instance may jeopardize the situation, we will report our

concerns to Children's Services and await further advice. We will normally tell you that a referral is being made and will record the reasons why we decided to follow this course of action.

All child protection records are kept securely electronically and filed separately from your child's general school file. The only staff that have access to these records are those who need to be informed about the concerns in order to protect and support your child.

Child protection is an extremely sensitive issue; it raises many questions and a range of strong emotions. We will ensure we do everything we possibly can to support our students and would like to assure you that any action taken will be in the best interests of your child.



Miss Katie Tucker
Senior Designated Safeguarding Lead



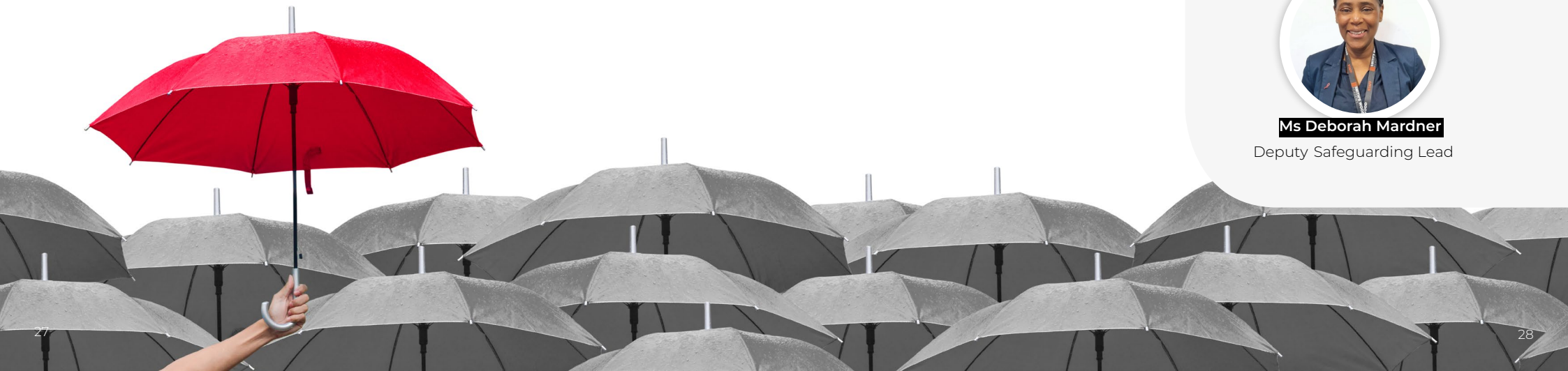
Mrs Yazmin Gardner
Deputy Safeguarding Lead



Ms Clare Powell
Deputy Safeguarding Lead



Ms Deborah Mardner
Deputy Safeguarding Lead



COMMUNICATION WITH PARENTS

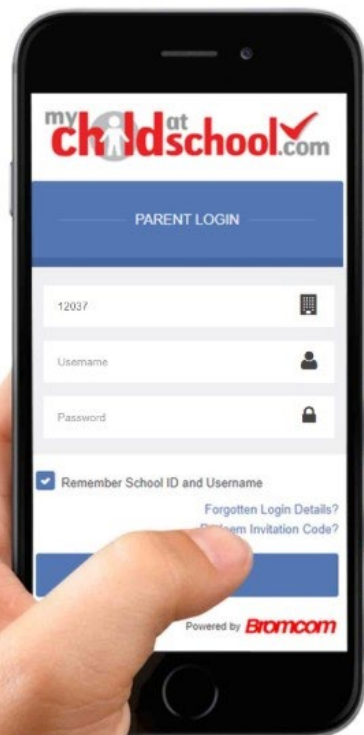
We actively encourage all students to discuss their progress to parents/ carers on a daily basis. If you have any concerns, please do not hesitate to contact your child's form tutor or Achievement Leader.

At the beginning of the year you will receive a list of important information which will include:

- **Form Tutor contact details**
- **Year 7 Information Evening**
- **A parent meeting with subject teachers in the summer term**
- **Progress reports which are published at key points throughout the year**

We find that the MCAS app and emails are our most effective method of communication to relay information such as: student reports, trip letters, school events etc. To receive up-to-date information please ensure you provide us with your email address when completing your child's on-line form.

It is imperative that you notify the school of any changes to contact details immediately. This includes mobile/landline numbers, email address and home address.



A minimum of two contacts per child is required.



NO PIERCINGS!

- X We allow one small stud in each ear. Any other piercings are unacceptable.
- X One watch only, no other jewellery. No smart watches.



UNIFORM STANDARDS

- Black blazer with Smith's Wood pocket badge
- White collared shirt
- School tie
- Jumper/cardigan is optional but must be v-neck
- Plain black tailored trousers or Smith's Wood tailored skirt
 - X no denim
 - X cord
 - X jersey
- Plain black or natural tights, black or white socks
- Plain black shoes
 - ✓ low heels
 - ✓ black laces
 - ✓ leather/leather look
 - ✓ polishable
 - X trainers
 - X high tops
 - X boots
 - X canvas/fabric
 - X coloured/white logos
- Headscarves worn for religious purposes should be black
- Natural hair colours only
 - X adornments
 - X extreme colours
- No extreme haircuts
 - X tramlines
 - X shaved head

At Smith's Wood Academy we believe in the importance of taking pride in our appearance and in representing ourselves and the Academy in a positive manner at all times; including on the way to and from the academy.

We believe that wearing the correct uniform sets the standards for learning, conveys the positive image that the Academy warrants in the local community and also ensures that staff are able to focus their attention on students' learning. In the same way many employers expect their staff to wear a uniform, we expect our students to wear the Smith's Wood Academy uniform correctly each and every day.

Smith's Wood offer a new blazer, tie and PE polo shirt free of charge for all students when they join us in Year 7.

Smith's Wood specific uniform is available to purchase from Clive Mark Schoolwear and Crested Schoolwear (Trutex Erdington and Sutton Coldfield), and this includes the full range of sports and PE kits.

All uniform, with the exception of the school blazer badge, school tie and sports polo-shirt, can be purchased from other retailers as long as they meet the uniform standard, for example, blazers purchased from Marks and Spencer or from Asda are acceptable if the school badge is bought and sewn on.

We would ask parents/carers to support us in ensuring that their child wears the correct uniform and they present themselves appropriately and to a high standard.

All outdoor clothing must only be worn outside and should not be worn during lessons or in the school building.

Uniform enquiries can be emailed to
office@smithswood.fmat.co.uk

www.cresteduniform.co.uk
www.clivemark.co.uk

KEY CONTACTS



Meet our Head of
Inclusion

Mrs E Douglas



Meet our
SEMH Coach

Miss V Chester



Meet our Y7 SEND
Transition Lead

Miss C Chester



Meet our Y7
Achievement Leader

Mr K Molloy

SENIOR LEADERSHIP TEAM 2026-27

PRINCIPAL

Mr S Huntington

VICE PRINCIPALS

Mr S Friswell

Miss N Munawar

ASSISTANT PRINCIPALS

Miss K Tucker

Miss J Odedra

Mrs L Huckstep





EXCELLENCE.
DEDICATION.
AMBITION.
INTEGRITY.
TRADITION.